

# BBSC

# Grand Finale

Oct 24, 2020

## ***SAILING INSTRUCTIONS***

### **1 RULES**

The race will be governed by the rules as defined in *The Racing Rules of Sailing*.  
Doublehanded class may use auto-pilot.

### **2 SCHEDULE**

The planned start time of the Distance race is 12 noon for the Cruiser, Doublehanded and Non-spin at 12:15.

The 1st start of the Spinnaker class will be approx. 20 minutes later.

### **3 RACING AREAS**

The racing area will be in waters of Rocky Bayou and Choctawhatchee Bay.

### **4 CLASSES**

- Non-spinnaker, Cruiser and Double-Handed classes will race one longer race.
- Spinnaker class will race a series of windward-leeward races. (3 races are planned)

### **5 COURSES** (See also course diagrams.)

The Distance race for the Non-spinnaker, Cruiser and Double-Handed classes –

Start at the Wednesday buoy

- |  |     |                            |
|--|-----|----------------------------|
| 1. Rocky #1                                    | - S |                            |
| 2. Boat anchored middle of bay off Cobbs Point | - P | (30 26.349 N - 86 29.941W) |
| 3. #58 Mid-bay bridge                          | - P |                            |

Finish at the Wednesday buoy.

(Distance 11.8 Nm)

Spinnaker class will use a windward-leeward course with legs approx. 1 nautical mile.

### **6 THE START**

Each start will be started by using RRS (standard 5 minute sequence).

Distance Course –

The starting line will be between the Wednesday buoy and the committee boat to the east.

W/L Course -

The starting line will be between the flag on the RC boat and the start mark to port.

### **7 THE FINISH**

Distance Course -

The finishing line for the distance race will be between Wednesday Buoy and the committee boat to the east. If the race committee is absent when a boat finishes, she should report her finishing time, and her position in relation to nearby boats, to the race committee at the first reasonable chance.

W/L Course –

The finish will be between the starting pin / leeward mark and the committee boat. The position of the committee boat will not change for the finish.

## **8 PENALTIES**

The first two sentences of rule 44.1 are changed to: 'A boat may take a One-Turn Penalty when she may have broken one or more rules of Part 2 or rule 31 in an incident while racing. However, when she may have broken one or more rules of Part 2 while in the zone around a mark other than a starting mark, her penalty shall be a Two-Turns Penalty.'

## **9 TIME LIMIT**

Boats that do not finish the distance race before 6PM shall be scored DNF.

## **10 PROTESTS**

A competitor intending to file a protest must notify the race committee upon finishing. Protest form must be filed with race committee chairman within 60 minutes of the race committee docking. A protest committee shall be established by the race committee Chairman, and they shall decide the outcome of the protest. If the involved parties agree, an open protest hearing / discussion will be held.

## **11 COMMUNICATION**

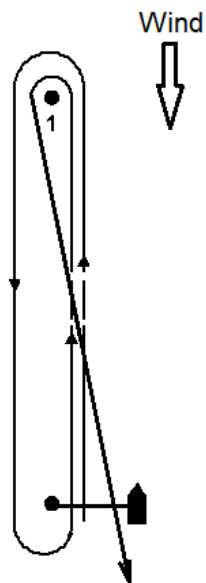
Race Committee Channel 69 or 407-620-2793 Cell

## **12 DISCLAIMER OF LIABILITY**

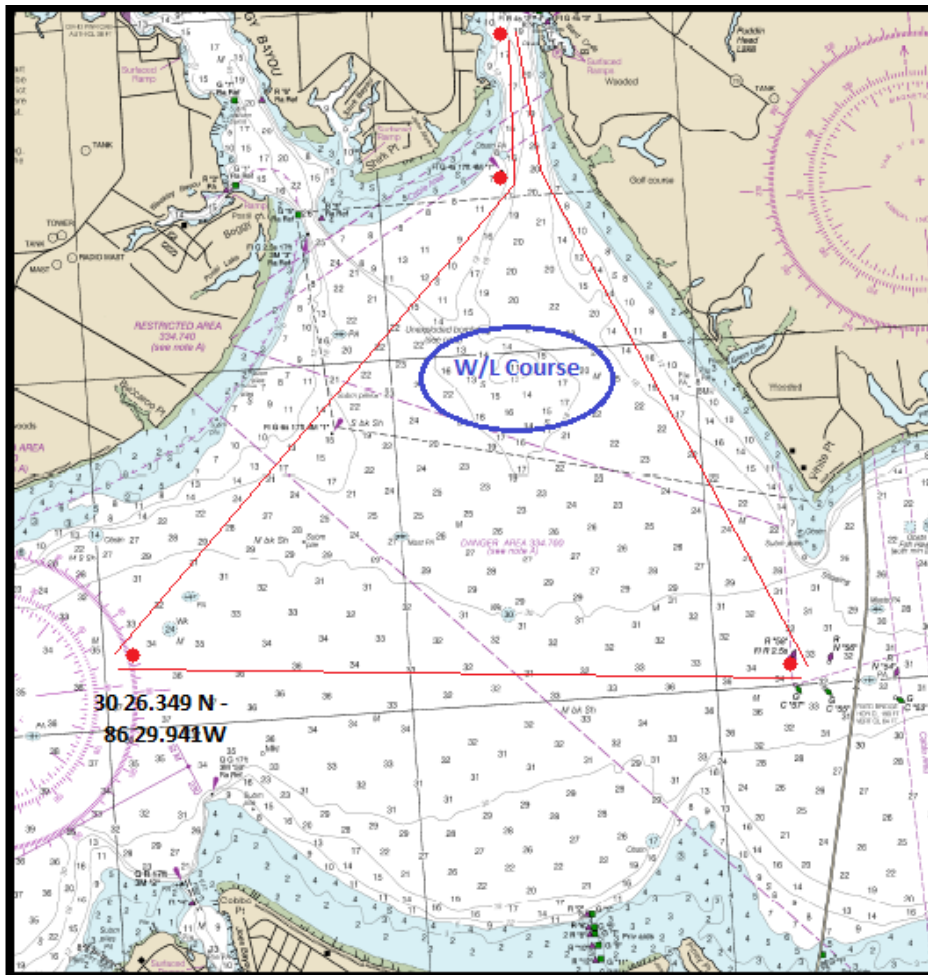
Competitors participate in the race entirely at their own risk. (See RRS 4 Decision to Race.) The organizing authority will not accept any liability for material damage or personal injury or death sustained in conjunction with or prior to, during, or after the regatta or regatta related events.

The event has been organized to observe social distancing requirements. Competitors are to observe any such requirements. The decision on whom to include in the make-up of the crew is entirely up to the individual skippers.

## Windward – Leeward Course Diagram



## Distance Course -



## Important flag signals:

Class flag (as described as skipper's meeting)

'P' Prep

'C' flag

'X' individual recall

'AP' Postponement (Code flag below)

'L' Come within hail (or follow me)

'S' shortened course

